



*At the Intersections*

AT THE INTERSECTION...

*of the solemn and the vibrant,  
of the individual and the collective,  
of the curious and the faithful,*



AT THE INTERSECTION...

*of spiritual rest and spiritual challenge,  
of preserving history and confronting history  
of tradition and transformation,*



*...sits a church nearly 200 years old,  
a sanctuary in the urban center of a capital city,  
a parish nearly 1770 strong,  
the cathedral seat of the Diocese of Tennessee,  
and a spiritual home for a diverse cross section of believers and seekers.*



*We are Christ Church Cathedral, and you can find us,  
with our grand wooden doors open wide,*



AT THE INTERSECTION

*of 9th Avenue and Broadway in downtown Nashville, TN*

AT THE INTERSECTION

*of seeking Christ and of serving Christ in all persons.*

*Peace be with you, and welcome.*



CHRIST CHURCH CATHEDRAL

*Almighty God, giver of every good gift:  
Send down upon our bishops, and other clergy,  
and upon the congregations committed to their charge,  
the healthful Spirit of thy grace;  
and, that they may truly please thee,  
pour upon them the continual dew of thy blessing.*

*Almighty God, giver of every good gift:  
Guide and sanctify, we pray, the one whom you call  
to serve as our next Dean and Rector,  
that by their prayer and service they may enrich your Church,  
and by their life and worship may glorify your Name.*

*Almighty God, giver of every good gift:  
Look graciously on your Church,  
and so guide the minds of those who shall choose  
a Dean and Rector for Christ Church Cathedral,  
that we may receive a faithful pastor, who will care for your people  
and equip us for ministries.*

*Grant this, O Lord, for the honor of  
our Advocate and Mediator, Jesus Christ.*

*Amen.*



# Intersections

Christ Church Cathedral

*Parish Profile 2024*

*Now & Next*

*Past & Present*

*Parish & Cathedral*

*Inreach & Outreach*

*Praising & Learning*

*People & Procedures*





*Go therefore to the intersections  
of the highways, and as many as you may find,  
invite to the marriage feast.*

**MATTHEW 22: 9**





*Now & Next*



# Welcome

*In a world where so much is rushed or transient or divisive or corrosive, the Episcopal Church abides. Championing a legacy of inclusion, it offers* itself as a steadfast and welcoming presence for spiritual seekers at all stages of inquiry and across all lines of race, ethnicity, socioeconomic standing, sexual orientation, and gender identification. We uphold this legacy at Christ Church Cathedral. Our mission is to seek and serve Christ in all persons, and we have no shortage of opportunity as population numbers continue to increase in downtown Nashville and in the surrounding metropolitan areas. All around us: buildings and cranes, taxis and bachelorette parties, new high-rise apartments and massive office complexes, with people streaming to and from home, work, bars, concerts, and sporting events. All around us, too, on our very doorstep: men in threadbare coats, women whose faces are gaunt, human beings in need.

Christ Church Cathedral is a sanctuary in the middle of this modern chaos. We strive to be a beacon of kingdom living. We seek to proclaim by word and example the Good News of God in Christ. What that means to us is that we lead with love. We listen. We hold space for differing perspectives and encourage dialogue. We look for the unique spiritual gifts of the individual and come together as one body. We care for friend, neighbor and stranger like family. We are a theologically curious, bold, inclusive, outreach-oriented parish in the heart of one of the country's most flourishing cities. We do so much, and yet we seek to be more: more welcoming, more impactful, more transformative, more faithful. Seeking is in our DNA. Christ Church Cathedral is a place of so much good and so much potential.



“ *At Christ Church, I see growth. I see people trying to do better all the time.* ”



As we understand it, to abide in Christ requires that we grow but also stay grounded. This intersection – of growth and groundedness, of tradition and transformation – is central to our identity at Christ Church Cathedral. As we approach our bicentennial, we reflect on who we have been and who we want to become. We embrace our faith tradition while we seek to expand it. We preserve our history while we courageously and humbly confront it. We praise God for the exquisite stone and stained glass that envelop and inspire us while we break ground on a new building of tall, clear windows and steel beams. We raise our voices to the pipes of the grand organ in the mornings and to the chords of the acoustic guitar as the sun sets. We verge, and we clap. As a congregation, we value silence, stillness, and contemplation. Likewise, we value social justice and serving the marginalized.

At this time and place, we at Christ Church Cathedral would not say that we are at a crossroads: we are not choosing to be this or that, to go this way or that way. Rather – like our Triune God who is at once Father, Son and Holy Spirit – we, too, are called to embody paradox. With faith, hope, and love, we abide at the intersections of past and present, of parish and cathedral, of praising and learning, of inreach and outreach, of procedures and *people, and ultimately at the intersection of now and next. We are nearly 200 years into the life of this church, and we are eager to initiate 200 more.*

“*Christ Church is a lot of things to a lot of people. We're eclectic and respect others' opinions. We can live with paradox and things not being neatly tied up.*”

“*Our members are diverse, independent thinkers who share the commonality of faith. We all love each other, but we are comfortable with disagreement.*”



## Mission Statement

With God's help, Christ Church, a cathedral parish in downtown Nashville, proclaims by word and example the Good News of God in Christ, seeking and serving Christ in all persons.

*We are called to be:*

**Disciples** who pursue the presence of God in prayer and in the celebration of the Holy Eucharist

**Evangelists** who make known God's plan for reconciliation, that all may grow into the full stature of Christ

**Servants** who seek the face of Christ in every human being and strive for the justice and peace of God

**Stewards** who acknowledge and honor the Holy Trinity as the source of all, in the care of creation and the right use of our gifts and offerings

**Friends** who welcome the stranger, bear one another's burdens, and share in the ministry of the apostles' teaching and fellowship



# Vision Statement

Engaging in a collective envisioning exercise in the Fall of 2023, we asked all members of the parish, clergy, and staff the following question: *What three words would you like people to think of when they think of Christ Church Cathedral?* The three words repeated most often were **welcoming**, **inclusive**, and **loving**. In these three words, the bare-bones of a new strategic vision begins to take shape. How we interpret these words, what they require of us, and where they will take us remains to be pursued and revealed, through Christ our Lord.





# Priorities

Christ Church Cathedral is clear about its priorities moving forward. The results from the congregational assessment conducted in the fall of 2023 delineated three main areas where we, as a congregation, would like to focus our energy and resources.

## **Make necessary changes to attract families with children and youth to our church.**

Though we are a dynamic, robust and engaged parish, we are also an aging one. Increasing the number of households with adults under the age of 40 is a critical next step. Because we do not have a preschool associated with our church, we do not capture young children through the door of education. Because we are a downtown parish and require a commute for most, if not all, of our families, we are not the most convenient option for worship and formation. These are challenges that we have met and overcome in the past and that we feel confident we can overcome in the near future with dedicated vision, energy, and resources.

## **Create more opportunities for people to form meaningful relationships.**

Our post-Covid, tech-centric world is starved for connection. We want to find community, and yet community seems to elude so many of us. Even in churches, where faith and fellowship are so closely linked, it can be hard to “find your people.” We are and have always been a relational church. Our natural way of building community tends to derive from outreach rather than organized social gatherings, but fostering deep connection among peers and between generations is vitally important to us. It will be a focal point as we continue to build new ways to socialize post-Covid.

## **Develop and implement a comprehensive strategy to reach new people and incorporate them into the life of the church.**

Hospitality has been a key theme to emerge from our self-inquiry this fall, and it will remain a top priority. As a Lenten discipline, we read Christine Pohl’s *Making Room: Recovering Hospitality as a Christian Tradition* and discussing it in small groups, formation classes, and sermons. Exploring what hospitality means to us and what it requires of us, we are likewise considering how we welcome the newcomer and enfold them in the life of the church. We are especially keen to involve those living within walking distance of our doors.



*Our priority moving forward should be youth. I say that because I think there’s been a decrease in attendance and engagement in that group and I just know from my being a youth at Christ Church, that was so important, so I think a big emphasis should be on youth.*



*We're so good at making the deeper connections that we don't always do initial connections well.*



*The place looks buttoned-up, but it really isn't. There is no other place like this downtown. We are at the crossroads of all kinds of communities; we just have to find a way to reach out to them.*



## Guiding Questions

Times of transition are opportunities for us to lean deeply into our faith and to trust that God, who is the foundation of all wisdom and the source of all courage, will guide us. As we consider the next phase in the life of Christ Church Cathedral – pursuant to our desire to be *welcoming, inclusive, and loving* – we are engaging in reflection and dialogue around several guiding questions, including the following:

- *What does hospitality mean to us and what does it ask of us?*
- *What does a commitment to inclusivity mean to us and what does it ask of us?*
- *How do we both honor our past and reconcile it?*
- *What does it mean for us to be a “downtown parish,” and how do we go about living out that vision?*
- *What does it mean for us to be a Cathedral, specifically the Cathedral of the Diocese of Tennessee, and how do we go about living out that vision?*
- *What do we imagine for, and expect of, ourselves when we express a desire to be a beacon of kingdom living?*



*Hope keeps me here. I came here and am staying here because I hope that this Church can be a loud voice in a city that needs leadership from the Church.*



## Dean & Rector Position

We desire a dynamic visionary leader who relates easily to a diverse group of parishioners and is committed to fostering the spiritual vitality of Christ Church Cathedral. Our new Dean will share our commitment to inclusivity, welcoming people of all races, sexual orientations, gender identities, economic backgrounds, and theological perspectives. Specifically, we desire a Dean and Rector who possesses the following qualities and talents:





### Spiritual Depth

Christ Church Cathedral desires **enlightened spiritual leadership** that arises from a deep, abiding faith in God. The new Dean will challenge us to live out our faith and guide us in discerning the appropriate means of doing so. A friend, a guide, and a mentor to parishioners, the Dean will keep our spiritual mission at the forefront of all that we do.

### Visionary Leadership

The new Dean should have a **bold vision** for the future of Christ Church Cathedral and the **courage to implement it**. The successful candidate will build consensus and will be adept at including the various constituencies of the parish in the creative unfolding of this vision. Recognizing the limitations of time and resources, the Dean will discern ministerial priorities and articulate clearly the reasons for pursuing them.

### Preaching

The new Dean should be a **gifted preacher** who will inspire us to grow in our faith and challenge us to bear witness to the message of Jesus Christ. The Dean should make Scripture come alive by applying it to the ordinary situations of life as well as to relevant world events and contemporary issues.

### Teaching

The new Dean should combine preaching skills with a talent for teaching, devising **meaningful educational opportunities** for adults in Sunday forums, Bible studies, and occasional symposia. Christ Church parishioners are highly-educated, curious people who value intellectual stimulation. The new Dean and Rector should welcome the opportunities and challenges that such a parish poses.

### Administration and Management

The new Dean will appreciate and embrace the administrative responsibilities of running both a parish and a cathedral. They must understand finances, help oversee our construction project, and manage our relationships in the downtown community and Diocese. They must be a **decisive, creative leader** who can inspire clergy and staff and motivate a talented group of lay leaders. The successful candidate can intuitively identify talent in staff and laity and encourage them to contribute fully.

### Community Catalyst

The new Dean must be committed to and excited by leading a parish located in a vibrant downtown community. This person should be willing to **speak with conviction to the concerns of the larger Nashville community** and should engage boldly with the inhabitants and institutions of our urban neighborhood. Our new Dean will embrace and enhance our role as a leader in Christian missions to provide for the vulnerable, bridge diverse communities and cultures, and seek peace in this chaotic world.

### Building Fellowship

The Covid-19 pandemic diminished our sense of community, and the successful candidate will work assiduously to **rebuild connections** through skillful pastoral leadership. Parishioners at Christ Church Cathedral are eager to have more opportunities for fellowship and community, and the new Dean should have a creative vision for strengthening the bonds among us.

### Pastoral Care

The new Dean should be a caring, empathetic person who will **prioritize pastoral ministry**. Whether tending to the sick, comforting the bereaved, or counseling the lonely, the Dean will respond with compassion and understanding to the emotional and spiritual needs of parishioners.

### Self-Awareness/Humility

The Dean will recognize his or her own limitations and will be confident in delegating responsibilities and seeking assistance when necessary. We desire a leader who cultivates a **Christ-like humility** in all aspects of ministry.



*The Dean needs to be the spiritual center of gravity.*



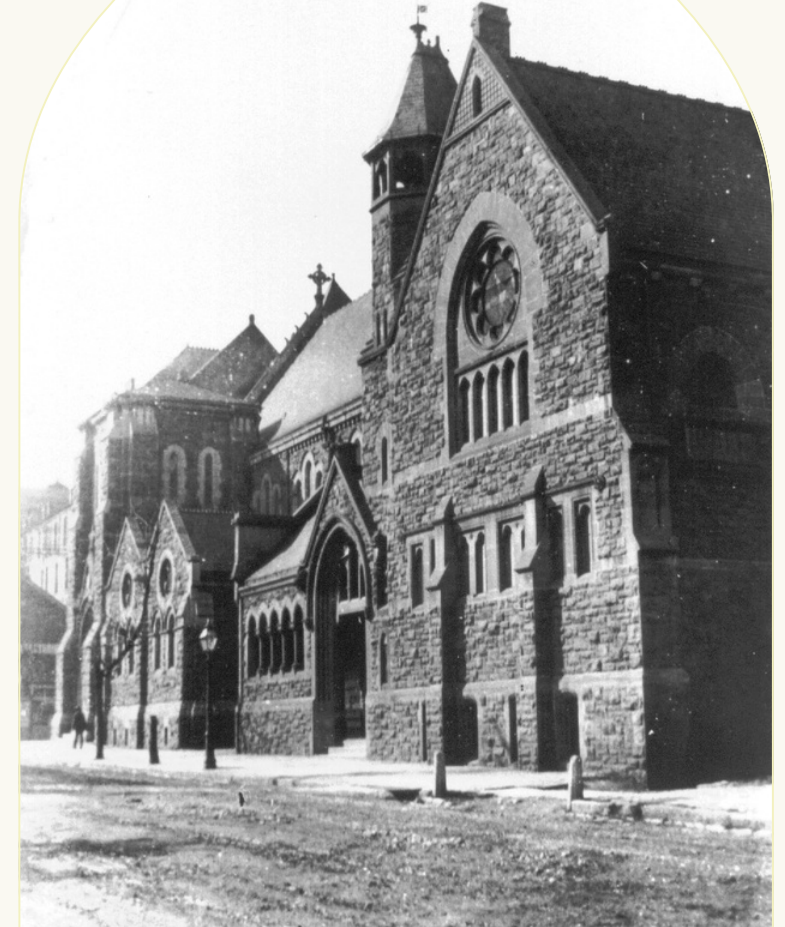
*Past & Present*



## Preserving History

In 1829, when Tennessee was still in its pioneer stages and had yet to establish turnpikes or even railroads, a newly ordained deacon by the name of James Hervey Otey led worship services in Franklin, TN before mounting a borrowed horse and galloping eighteen miles north into “town” to open the doors of the Masonic Hall – even building a fire if necessary – in order to host worship. Under Otey’s leadership, in the summer of 1829, a parish was formed, its Vestry elected. Less than a year later, on July 6, 1831, the church was consecrated, making it the first Episcopal church in the state of Tennessee. The Christ Church Cathedral of today was founded.

The church endured the Civil War, often welcoming Federal soldiers into worship services while managing to avoid their occupation, and in 1883 secured land to build a new church at the intersection of Broadway and 9th Avenue. Construction began in 1890, and worship commenced less than five years later. Since that time, Christ Church Cathedral has been a fixture in downtown Nashville. With its distinctive even nostalgic architecture and its bell to toll the hour of worship, it reminds us of the love of God, which bears all things, believes all things, hopes all things, and endures all things.



*Read an account of our first 100 years in the book: Christ Church Cathedral 1829-1929*

[READ HERE](#)



# Preserving History

## *The Role of Women*

Since its founding, women have played a significant role in the growth of Christ Church Cathedral. The earliest record we have of any society of Christ Church is the **Parish Aid and Sewing Society**, which comprised a team of indefatigable women who were dogged in their efforts to raise money on behalf of the parish. In 1834, they helped the Vestry pay off the debt of the church. In 1878, they were responsible for purchasing the rectory on 25th Avenue, and in 1883 they supplied the Vestry with the funds needed to purchase the lot at 9th Avenue and Broadway, the very ground we worship on today. It was noted in a report made the following year that, *This record should certainly prove to the men of the congregation that they have noble and efficient co-workers.* The women of the Parish Aid and Sewing Society were also responsible for the purchase of the church bell, the silver alms basins, the silver service for the Holy Eucharist, the lectern to the right of the chancel, and ultimately the richly carved wooden pulpit to the left of the chancel.

It would be nearly 100 years before a woman was eligible to preach from that pulpit. The first female priest at Christ Church was Mary Jane Levitch, hired in 1985. A pioneer in the church, she paved the way for numerous female priests employed at the Cathedral over the past (almost) four decades, including The Reverend Anne Stevenson, whose more than 20-year tenure included serving as Interim Rector during two previous transitions, and The Reverend Vicki T. Burgess, who is currently serving as our Interim Rector. Our clergy features additional outstanding females, including The Reverend Canon Melissa Smith, The Reverend Canon Anna Russell Friedman, The Reverend Madeleine Rebouché, and The Reverend Mary McCarthy.

The first woman elected to the Vestry at Christ Church Cathedral was Mollie Hirsch in 1969. She, too, paved the way for future lay leaders of the church, including our former Senior Warden, Tyler Yarbro, who served as a steadfast, capable leader during this initial phase of this transition.





# Confronting History

## *The Isaac Project*

Begun in 2021, the Isaac Project is part of Christ Church's plan to have a visible presence and a leadership role with strategic partners in all four corners of the city of Nashville. We are intent on becoming a spiritual home to the multi-cultural, multi-ethnic population that now resides in middle Tennessee. The word becoming is intentional as it recognizes work that has been put into process and work that is yet to do. *Essential to that growth is telling Christ Church's history in a way that names the prejudices of our past and confesses sins of complicity.* This work has grounded early phases of The Isaac Project. The ultimate goal, though, is that this work will lead to reformation, reconciliation, and new and renewed ministry at Christ Church Cathedral.

The plan for The Isaac Project adopted by the Vestry of Christ Church Cathedral laid out in five phases:

1. Origins and parochial development – *completed*
2. Public repentance and renewal – *in-process*
3. Penance
4. Institutional reform
5. Renewal by the Spirit & refreshment for service

We are currently in Phase 2. Our work is focused on three things:

- Continuing historical research into the ways in which Christ Church has benefitted from and been complicit in the prevailing anti-Black racist sentiment of the society and the people it was serving.
- Working to engage community partners, including other parishes and congregations, in conversation about the work of The Isaac Project.
- Working toward a public Service of Repentance in response to our research and taking into account feedback from conversation partners. This will be the culmination of Phase 2.

Strategic partners in the work of the Isaac Project include our two congregational partners, St. Anselm's Episcopal Church and Gordon Memorial United Methodist (more about these partnerships can be found in the Parish & Cathedral section) as well as the Beloved Community, the arm of the Episcopal Church's that fosters long-term commitment to racial reconciliation. To read more about the Isaac Project in detail, visit [Phase 1](#), [Isaac Project Phase 2-Intro](#) and [Phase 2](#).

This work epitomizes the church that we are and that we strive to be: honest, inclusive, self-aware, and accountable.



*What compels me about Christ Church is our desire to be honest with ourselves regarding the Isaac Project and seeking to have a relationship with Gordon Memorial United Methodist.*



## Current Building

When asked *What compels you about Christ Church Cathedral?* – in effect what keeps you coming back Sunday after Sunday – many of our parishioners said, among other answers, the beauty of the nave. It is indeed an exquisite space, at once inspiring and calming.

The groundbreaking for our current building took place in 1890. The cornerstone, weighing 5,555 pounds and quarried onsite, was laid in 1892. The doors were opened in 1894 on a Sunday morning during Advent. As members of the clergy entered the sanctuary and processed down the aisle toward the intricately carved high altar, they repeated antiphonally the Twenty-fourth Psalm: *Lift up your heads, O gates! and be lifted up, O ancient doors! that the King of glory may come in.* And the King of glory did indeed come in. Here He remains.

Amid the concrete and steel of modern architecture and beneath the gaze of dozens of construction cranes, Christ Church Cathedral distinguishes itself on the exterior with its Victorian Gothic architecture, the vision of New York architect Francis Hatch Kimball, and its sandstone walls, a gift from our longtime friend, Sewanee: The University of the South. The stunning stained glass windows dominate the interior, including the Resurrection windows above the altar, which were among the original twelve in the building when it opened. Visitors ask to tour our nave because of its rich history and beauty. Newcomers and regulars alike feel the strong presence of the Holy Spirit when they enter the sanctuary, absorbing its soft light and elaborate reliefs, the figures of Jesus, of Mary, of the saints and the angels of the heavenly host watching over them, the wood floors worn by the generations of worshippers who have come before. It is a holy place, a true Sacred Space for the City.

“ *What this place feels like, what it evokes, is hard to articulate. I just step in and know that God is here. This is a deeply holy place.* ”

“ *I moved here 11 years ago, and I was overwhelmed by the beauty of the place and sensed this was an important place for my future.* ”



*More about the architecture and stained glass windows of Christ Church Cathedral:*

[LEARN MORE](#)



# New Building

In 2018, Christ Church initiated the “Let the Doors Be Opened” capital campaign to accommodate the need for more space, particularly for programming centered on fellowship, youth, and outreach. The initial goal was to raise \$8 million, which we not only met but exceeded, securing \$9.7 million in pledges and one-time gifts. With rising construction costs across Nashville, it was determined in 2022 that additional funds were needed to complete the project, and so we put forth a second and final ask for support of the concluding phase of this work. To date, we have raised a total of \$11.2 million.

The plans were initially developed with hopes of breaking ground in 2019 or 2020, but the project was put on hold during the pandemic and recovery years. **On March 17, 2024, construction of the new building officially commenced.** The project begins with the demolition of a renovated bank building bought over thirty years ago. By project’s end, we will have dedicated space for outreach activities and youth as well as a generous fellowship hall, and we will have eliminated the need for rented space for youth (\$80,000 annually). Our new building will enhance our presence downtown, provide much-needed and intentional space for our youth, and enable larger gatherings and more space for hosting outreach activities. In order to complement the existing limestone structure and support the presence we already have at 9th and Broadway, the new building will feature a contemporary aesthetic of steel and clear glass. The pair of buildings will echo the groundedness and the growth that intersect in the identity of Christ Church Cathedral.

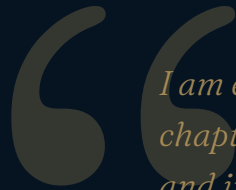


*Curious about our current phase of the process?*

[LEARN MORE](#)



*View an inspiring video about our vision for this building and for the future of Christ Church Cathedral:*



*I am excited to be a part of this chapter of Christ Church's history and invested in helping the Cathedral grow and move into an even greater space of diversity of thought, backgrounds, and abilities. We have this incredible physical space downtown. If we can use it to serve more people, that seems to me to be an obligation.*



[View here...](#)





*Parish & Cathedral*



## Downtown Parish

As we begin the third century of serving downtown Nashville, it is important to remember what those before us asserted: *Certain it is that Christ Church has never moved out, nor sought to move out from the heart of the life of the city...One may well conclude that there is no great part in the life of Nashville which is not touched by this congregation.* Coming from as close as 0.5 miles from our building and as far afield as 43.4 miles away in the small town of Dickson, TN, the congregation of Christ Church Cathedral converges each week from more than 50 zip codes in Middle Tennessee. The opportunity to worship and serve in a cathedral setting in a vibrant downtown location has led to the cultivation of a congregation with a posture towards service – of both our downtown neighbors and our Episcopal brothers and sisters across the Diocese.

The Mission of Christ Church Cathedral reads: *With God's help, Christ Church, a cathedral parish in **downtown** Nashville, proclaims by word and example the Good News of God in Christ, seeking and serving Christ in all persons.* At 900 Broadway, Christ Church Cathedral, Nashville's first Episcopal parish (1829), is situated along the downtown artery of the 26th largest city in the United States. With an estimated 100 new people moving to our city every day over the past few years and tourism numbers reaching 14.4 million in 2022, our city has been growing and changing exponentially. Because of our location in Nashville's urban center, we have been at the core of this explosive growth, a locus that has put us face-to-face with both the harshest realities and the most invigorating developments happening in our city.



“ *We want to be ambassadors to the downtown community.* ”



# Location

*Our 140 year-old building is...*



**Located at the epicenter of the music industry.** We are less than a mile from the historic Ryman Auditorium, the Country Music Hall of Fame, and Music Row.



**Positioned within a robust fine arts environment.** Around the corner lie the Tennessee Performing Arts Center, the Frist Art Museum, and the Schermerhorn Symphony Center. Christ Church's own "Sacred Space for the City" programs build on this precedent of excellence.



**Surrounded by athletics at the highest level.** Bridgestone Arena, home of the Nashville Predators (NHL) is only blocks away from our front doors. Across the Cumberland River is Nissan Stadium where the Tennessee Titans (NFL) currently play. First Horizon Park, where the Nashville Sounds (AAA affiliate of the Milwaukee Brewers) lies 1.4 miles north. Geodis Park, the largest soccer-specific stadium in the United States, is a mere 3.6 miles away and is home to Nashville SC (MLS).



**Situated at the foot of Tennessee's capitol hill.** We are within throwing distance of the Tennessee State Capitol building and a federal building housing the United States District Court for the Middle District of Tennessee. Protestors and activists often pass by our doors on their way to make their voices heard at these iconic locations..



**Buoyed by our proximity to institutions of higher learning.** Within 15 minutes of the cathedral lie the campuses of Fisk University, Tennessee State University, Meharry Medical College, Vanderbilt University, Belmont University, Lipscomb University, and Trevecca Nazarene University. A commitment to and appreciation for higher education is echoed in our congregation's own educational profile.



**Confronted by the realities of Nashville's housing crisis.** We are within a mile of the headquarters of Room In The Inn and the Nashville Rescue Mission, two organizations with whom we actively partner to house Nashvillians experiencing homelessness in addition to opening our own doors each week to further serve those near us in need.



## Cathedral Seat

The Diocese of Tennessee, which originally encompassed the entire state, held its first convention in Nashville in 1829, the very year that Christ Church was founded. The two have grown in tandem ever since. As part of the vision to further develop the mission and ministry of the Episcopal Church in the state, the Diocese was subsequently divided into three "Grand Divisions" representing the major geographic zones of the state of Tennessee. The Dioceses of East and West Tennessee were created. [The Diocese of Tennessee](#), as it stands today, was established in the 1980s and is home to upwards of 16,000 baptized members residing in the Middle Tennessee area. It houses forty-four distinct parishes and has associations with The Episcopal School of Nashville; St. Andrew's - Sewanee School; Sewanee: The University of the South; St. Mary's Sewanee; The Ayres Center for Spiritual Development; The Community of St. Mary - Southern Province; and St. Luke's Community House.

As the first Episcopal parish in Nashville, often referred to as the "Mother Church" for spawning some thirteen mission churches in the Diocese, five of which are still flourishing, it is fitting that Christ Church be named the cathedral seat of the Diocese of Tennessee. The first time the invitation was extended, in 1870, Christ Church declined. The offer of the designation was extended again in the early 1990s and formalized in 1997, at which point in time Christ Church became officially known as Christ Church Cathedral. Today we are the seat of The Right Reverend John C. Bauerschmidt, who is the eleventh bishop of the Diocese of Tennessee. He was elected on October 28, 2006 and consecrated on January 27, 2007 before assuming his official seat at Christ Church Cathedral.

Christ Church Cathedral has a long history of supporting the Diocese, both financially and in terms of personnel. Eight of the nine rectors who led the parish between 1894 and 1940 later became bishops. Likewise, we have sought to support and extend the spiritual initiatives of the Diocese, officially forming a Commission dedicated to Cathedral Life, whose charge is to "define and develop ways to enable all people to encounter God in art and in worship within the Cathedral's historic space." In accordance with the diocesan canon, the commission includes committees and activities that enable the church to be "a place of liturgical and spiritual renewal; a center for Christian education and outreach to the congregations of the Diocese, the wider Church, and the community; an ecumenical center and 'house of prayer for all people'; and a place where the Good News of God in Christ is proclaimed 'by word and example'."





## Congregational Partnerships

As the seat of the Bishop of Tennessee, we have taken an active and intentional leadership role in the Diocese, entering into two congregational partnerships, one within the diocese and one outside it. The oldest of these partnerships is with **St. Anselm's Episcopal Church**, a campus ministry for Fisk University that was started by the Diocese of Tennessee in the 1960s with the help of funding from Christ Church. That partnership was renewed in 2020, when our two congregations agreed to enter into a three-year covenant to commence with the hiring of a new Vicar at St. Anselm's. In January 2022, Vicar Tabitha Ssonko assumed her role at St. Anselm's and our covenant was officially initiated. Through a Walking Together Initiative, we continue to strengthen the bonds of our two parishes and bring our ministries closer. The second of these partnerships is with **Gordon Memorial United Methodist Church**, a historic church in North Nashville. For the past six years, our parishioners have been companions in faith across a spectrum of spiritual expressions, including worship and outreach. We join in song and in service.

In both partnerships, we encourage members to "cross-worship," whether through formally co-hosted worship services, such as The Feast of Absalom Jones, or in regular Sunday offerings. Likewise, we partner with both congregations to share opportunities of spiritual formation, especially around the themes of reconciliation and diversity. Examples of these opportunities have included panel discussions about Civil Rights issues, hosted by our Isaac Project committee. We are working diligently to live up to our ongoing responsibilities as members of each of these partnerships, while remaining ever mindful of the work of the Holy Spirit guiding and enriching us. Alongside these partners, we are able to work together for the common good and to advance our shared mission for social justice.



*Inreach & Outreach*



## Inreach

In 1929, a parishioner penned the following description of parish life:

*THERE are no melancholy ghosts that haunt the shadowed quietness of Christ Church's beautiful humanness and peace. A sense of God's near presence and the friendliness of human life and love draw near together here as in a place of comfort... A communion here of happy-hearted souls, on this side of the River or on that, it matters little as blessed memories come and go.*



## *Inreach*

A communion of happy-hearted souls, on this side of the River or on that, continues to be an apt description of the community of people who call Christ Church home. Save the tourists fresh off the sidewalk, nearly everyone who worships here has driven past another church to come to Christ Church Cathedral. When asked *Why?* in our recent survey, a significant number cited “the people” or “the community.” Our parish draws from a broad swath of people from across Nashville and surrounding counties. We are not all of one neighborhood or one opinion. Though data shows we are collectively highly educated and theologically unified, we are a widely varied group. On any given Sunday, a neurosurgeon at Vanderbilt sits next to a bassist in a popular rock band. A young girl proudly sporting a tiara shares the pew with a nonagenarian who sneaks her a mint. One priest grew up at this very church; another wasn’t confirmed until he was an adult. And during the height of the COVID-19 pandemic, “coffee minutes” on Zoom brought in seekers from as far away as England.

What draws us together? A shared call to walk in love among people from all walks of life. A mutual curiosity to know and be known by God. A yearning to connect. And a deep desire to come to the *intersection of the highways, and as many as we may find, invite to the feast* (Matthew 22:9). All have a place at our table.



“ *It feels like my family, really.* ”

“ *Christ Church Cathedral can be described as the spiritual refugee camp of Nashville.* ”





*Inreach*

## Parish Life Highlights

Among the highlights of our Parish Life ministries are an annual Parish Picnic in the spring and a Parish Retreat in the late summer or early fall. The **Parish Picnic** gathers worshippers for an outdoor Eucharist at a local park, followed by lunch, games, and fellowship. The **Parish Retreat**, a multigenerational weekend away, offers further opportunities for worship, fellowship, meals, outdoor activities, and more.

The **Women's Retreat**, which began as a weekend offsite event in 2002 but went on hiatus because of COVID-19, was revived this year as a one-day onsite event, while the men gather on the 3rd Tuesday of each month for the **Men's Prayer Breakfast**. Under the leadership of The Reverend Madeleine Rebouché, we have a flourishing **Young Adults** group which gathers regularly for Theology on Tap, sports events, and other fellowship outings.

The **Cathedral Book Club**, one of the longest continuing fellowship groups in our parish, meets monthly, and **Newcomer Brunches** are held regularly to welcome those newly joining us. Prior to COVID, the Cathedral also offered several home-based **Foyer Groups**, which we are reviving this very Eastertide.

Regardless of activity, we delight in one another's presence. With joyful hearts, a spirit of fun, a ready embrace, and easy laughter, we who are many come together as one body, letting our collective light shine.





*Inreach*

## Pastoral Care

The Cathedral offers a variety of prayer and healing ministries for our parish and wider community. In addition to the usual Sunday and weekday Prayers of the People, trained lay ministers offer specific **Healing Prayers** in the chapel during Sunday Eucharists. For those unable to make it to in-person worship, lay **Eucharistic Visitors** are sent out at the conclusion of each Sunday morning service to bring the sacrament. Under the direction of The Reverend Richard Wineland, the **Many Paths Recovery Ministry** meets weekly on Wednesdays, and has recently added a Morning Prayer gathering on Sundays.

Our **Prayer Shawl/Prayer Patch** ministry invites those with knitting and crocheting skills to create beautiful blankets and small prayer patches while praying for those who will receive them. Among the recipients are those facing a terminal illness, a transition to an assisted living facility, or an infant in the NICU. Prayer patches have also recently been included in the welcome bags provided to Sunday visitors. During Advent, small decorated **Jesse Trees** or amaryllis bulbs are delivered to homebound parishioners, along with a prayer patch and a card decorated by our youth. The **Advent/Lent Buddies** ministry pairs groups of parishioners for prayers and visits during those seasons.

In times of loss, parishioners on the **Bereavement Committee** reach out with notes of acknowledgement, prayers, and logistical help for burial liturgies. The **Paws and Claws** ministry offers support for those experiencing the loss of a pet, including a memorial service this past year on the feast of St. Francis. The **Night of Light** liturgy in Advent acknowledges the particular grief many may experience around the holidays.

In times of joy, the **Guild of the Christ Child** delivers meals to families with newborns, while the **Birthday Note** ministry sends birthday cards and prayers to parishioners turning 65 and older.

Beyond our immediate parish family, the Cathedral also participates in the **Diocesan Day of Prayer**, which in past years has included a labyrinth prayer walk, Anglican prayer beads, and other forms of prayer.



*I'm constantly amazed at how people in this church give so much and care so much.*



## Outreach

Outreach is a pillar of our church identity. It is why many of us make the commute to worship here, where opportunities for ministry are at our doorstep. People in need line up on Sunday mornings, waiting for our arrival. They are welcomed, given a cup of coffee, and offered a coat and/or toiletries. They are prayed with, over, and for. Likewise, on Tuesday and Thursday evenings during the cold season, through our partnership with Room In The Inn, people in need line up for a warm meal, fellowship, and a safe place to sleep. Our outreach efforts extend beyond this building in ever-widening circles across the city: in bicycle routes to deliver burritos, in prayer shawls delivered to the ill, in diapers boxed and sent to families. It extends in ever-widening circles across other cities and communities: in youth missions to Memphis and to Bolivia and in funds to help build a school in Boc Banique, Haiti. And it extends in ever-widening circles across “this fragile Earth, our island home” through the efforts of our Creation Care committee. If fault is to be found with our ministries, it is that we take on too much. We can’t seem to help it. In reflecting on the critical success factors for driving satisfaction in our congregation, we identified a calling to ministry and a spirit of involvement as two areas with high potential for impact. In developing plans for our new building, we are prioritizing dedicated spaces for outreach. In the meantime, as our campus undergoes construction, we will be asked to adapt the ways we serve and we will be creative in the ways we respond. Living out our faith through ministry is one of our pillars of identity and our calling card as a downtown parish.

“ *This is a place that shows love in actionable ways. We are encouraged to go fill the need in the world.* ”





Outreach

# Doorstep Ministries

### Urban Bicycle Food Ministry

Volunteers prepare burritos and deliver them, along with seasonal supplies, to those experiencing homelessness in downtown Nashville.

### Wayfarers

Each Sunday, we serve approximately 30 homeless and needy visitors to the church, with a warm greeting, a hot cup of coffee and a coupon card for breakfast at McDonalds. When needed, volunteers also provide clothing, toiletries and advice on social services available elsewhere in Nashville.

### Room In The Inn

As part of the winter shelter program, we host 24 unhoused women and men two nights each week during the cold months providing fellowship, shelter, food, clothes and necessities.

### Church in the Yard

We serve 200 to 300 meals to the hungry and those experiencing homelessness at the nearby Church of the Holy Trinity every first Sunday of the month. Volunteers join their guests in the Eucharist before serving lunch.



*More than just a warm bed, Christ Church Cathedral opens its doors as a winter haven for Nashville's unsheltered men and women through Room In The Inn. My joy in being part of this program over the years arises from seeing firsthand the remarkable exchange of hospitality between our homeless guests and parish members. It's a reciprocal interaction where both giving and receiving enhance our lives in surprising ways.*

DAVID MORTON



*In 2020, during a most uncertain time in our world's history, I discovered how to truly serve others, while serving God, via Urban Bicycle Food Ministry. Along with my two daughters, I worked outside my comfort zone and learned to connect with individuals experiencing homelessness in downtown Nashville. Street ministry has become absolutely vital to my life and I cannot imagine not serving others in this way.*

CHRIS ISBELL





## Outreach

# Broader Ministries

### **NOAH**

Nashville Organized for Action and Hope (NOAH) is a faith-led coalition composed of multi-racial and interdenominational congregations, community organizations, and labor unions that work to give voice to traditionally marginalized people.

### **Death Row Visitation Ministry (VODR)**

To validate the dignity of every human being and spread the love of Christ, every death row prisoner is matched with a parishioner, who regularly sends letters and makes visits.

### **Amistad Mission**

Through ongoing prayer and summer mission trips, we support the Amistad Mission in Bolivia, which consists of a children's village in the city of Cochabamba and a medical clinic, day care, and school in Aramasi, a village in the high Andes mountains.

### **St. George's Church, Baghdad**

Precious to us in partnership is St. George's Church, Baghdad, which has several hundred worshippers and provides humanitarian assistance to scores of people from all faiths, including a clinic and the offering of resources.

### **Boc Banique**

Our efforts in Haiti are centered around educating and feeding children in the school of the village of Boc Banique.



“ *I've never been to a church where outreach is so important.* ”

“ *We are a highly intellectual congregation, but we live out our faith more by our hands than by our heads.* ”



*Outreach*

## Grants Committee

The Grants Committee helps allocate ten percent of all budgeted pledges and offering plate income to outreach for the support of the vulnerable.

**\$236,622**

In 2023, the Grants Commission made recommendations to the Vestry for the distribution of \$236,622 in funds, including this past year's special offerings for Easter, Thanksgiving, and Christmas.

**\$1,895**

The 2023 Thanksgiving special offering of \$1,895 was given to Mosaic Middle East - St. Georges Anglican Church Baghdad to help vulnerable and persecuted people in Iraq and Jordan. The church runs a medical/dental clinic that treats for free 1,500 patients a month. It also has a kindergarten and a cultural center.

**\$8,053**

For Easter, the Grants Commission recommended the 2023 special offering of \$8,053 go to Episcopal Relief and Development specifically to earthquake victims in Turkey and Syria.

**\$9,518**

The Christmas special offering of \$9,518 went to Rooftop Ministry. Rooftop has been providing emergency rental or mortgage assistance to residents of Davidson County through a partnership with local congregations. Founded in 2006, Rooftop has assisted more than 11,000 clients and provided more than \$5.3 million in rental, mortgage, and utility assistance.



*Outreach*

# 2023 Allocations

## *Local Agencies*

St. Lukes .....	\$35,200
Room In The Inn.....	\$29,700
The Nashville Food Project .....	\$7,700
Preston Taylor Ministries .....	\$7,700
Family Reconciliation Center .....	\$10,450
Rooftop.....	\$12,100
Matthew 25.....	\$5,000
Nashville Cares.....	\$5,500
Guardianship and Trusts.....	\$2,500
Nashville Organized for Action and Hope (NOAH) .....	(Membership Dues) \$4,000
East Nashville Hope Exchange .....	\$2,200
Nashville Rescue Mission .....	\$1,380

## *Internal Programs*

Wayfarer's Fund .....	\$10,000
Room In The Inn .....	\$4,400
Urban Bicycle Food Ministry .....	\$3,500
Church In The Yard .....	\$1,650

## *Global Agencies*

AMISTAD .....	\$46,000
Boc Banique Haiti Anchor Investment .....	\$11,000
St. John Divine Community Center .....	\$5,000
Mosaic Middle East - St. George's Anglican Church .....	\$5,500
Liberian Relief Effort .....	\$2,000

<b>TOTAL LOCAL .....</b>	<b>\$142,980</b>
<b>TOTAL GLOBAL .....</b>	<b>\$69,700</b>
<b>LOCAL DISCRETIONARY.....</b>	<b>\$1,786</b>
<b>GLOBAL DISCRETIONARY .....</b>	<b>\$2,690</b>

*Total* **\$236,622**



*Praising & Learning*





## Liturgy

We know from the gospel of Matthew that where two or more gather in Jesus's name, He is with them. This gospel promise feels resoundingly true at Christ Church Cathedral. The presence of Christ is powerfully experienced by those who gather in our pews during worship. Everything – from the lovely, familiar lines of the liturgy to the wafer pressed resolutely into our palms – hearkens to the divine that dwells among us. Hours of worship at Christ Church Cathedral, be they lunchtime on a Tuesday morning or dusk on Sunday evening, are ever inspired and inspiring.

Liturgy (literally, 'the work of the people') is the main occupation and chief joy of the people of God. Praising God, we open ourselves to developing new eyes to see and new ears to hear. Because we are a congregation that values diversity and seeks to reach people from all four corners of the city and beyond, our liturgies range from the high holy to the contemporary. Our focal point for all services remains *The Book of Common Prayer*.

*On any given Sunday, we host five worship services:*

- 7:30 a.m. Holy Eucharist Rite I, no music
- 8:00 a.m. Recovery Morning Prayer
- 8:45 a.m. Holy Eucharist Rite II, Children's Choir, livestreamed
- 11:15 a.m. Holy Eucharist Rite II, Cathedral Choir, livestreamed
- 6:00 p.m. Holy Eucharist Rite II, casual, also called Breaking Bread@6 or BB@6, livestreamed.



*To experience any of our liturgies firsthand, please explore our archive of our streamed services*

LEARN MORE



Families with young children are welcome at all services. Parents may choose to keep their children with them during the entirety of the service, for part of the service, or not at all, opting instead to let our devoted childcare staff watch over them during the 8:45 and/or the 11:15 services. Children are also invited to serve in the altar party, beginning as young as they feel willing and able to carry the torches. Involving our children in our services is vitally important to our mission of bringing children up in the ways and love of Jesus Christ.

At all services, all persons are invited to the altar during Holy Communion, whether to receive the Bread and Wine or to receive a blessing, and anyone desiring a prayer of healing is invited into the chapel for a laying on of hands. All services also feature the leadership of laypersons, who serve as Greeters, Lectors, Ushers, Acolytes, Sacristans, Vergers, Eucharistic Visitors, and Eucharistic Ministers. Lay leaders serve in the Flower Guild and Altar Guild and in the Healing Ministry, all of which are essential for the fullness of the worship experience.

### **BB@6**

Launched a decade or so ago, BB@6 is a fan favorite that draws a cross section of worshippers, from young adults to empty nesters to kids (who can run a little wild between the pews) to teenagers who gather for pizza and fellowship afterward. Once a month, a jazz quintet plays, while other Sundays may feature our very own Reverend Richard Wineland on acoustic guitar accompanied by other members of our community.

### **Special Services**

In addition to Solemn Eucharists on Principal Feast days, other memorable worship events include Evensongs, The Blessing of the Animals (St. Francis), and Celtic Taizé (St. Patrick). In conjunction with the Diocese, we have celebrated The Feast of Absalom Jones, Diocesan Ordinations, and Diocesan Confirmations (at the Easter Vigil).



*Christ Church Cathedral takes the presence of children seriously. The music is led by children. The acolytes include children. The children are the now. They are not treated as a separate category brought out in special times.*



# Music

The [music at Christ Church Cathedral](#) is varied, vibrant, and absolutely lovely – just as it was when the church first opened its doors. A record of that day nearly 200 years ago shares that, after the clergy had processed down the aisle, the Hallelujah chorus was sung and was *an outburst of praise seldom equaled in this musical city*. The same can be said for our music today.

## Cathedral Choir

Under the direction of Canon for Music, Dr. Michael Velting, and Associate Organist and Choirmaster, Dr. Malcolm Matthews, our choral ensembles present a variety of musical offerings from Renaissance and Tudor motets and Bach cantatas to traditional Anglican choral pieces and new compositions by living composers. The late service features the highly trained Cathedral Choir, which is composed of twenty-six singers, including eleven paid section leaders and fifteen volunteers. This choir also sings Choral Evensong throughout the years and at standout worship services, such as Lessons and Carols.

## Cathedral Choristers

The 8:45 a.m. service, and other select events, features the music of our Cathedral Choristers, including Junior Choristers (2nd, 3rd, and 4th grades) and Senior Choristers (5th grade through high school), who train under a curriculum adapted from the Royal School of Church Music model. In addition to weekly vocal training and the skill of reading music, Choristers enrich their faith and their sense of self by serving as leaders during worship. They also enjoy great fellowship. Choristers come together annually for a retreat and have the opportunity to connect with choristers from other parishes around the area, as well as nationwide, during the Cathedral Chorister Festival.





## *Immerse yourself in the music of Christ Church Cathedral:*



*Music is my chief prayer language. In the intricate beauty of Cathedral Choir anthems we work so hard to perfect, the meditative simplicity of a Taizé service, the stunning purity of children's voices, the lively rhythms of the Jazz Mass, the energetic chords of our youth Discovery Weekend, and the ultimate communal experience of congregational singing, I most directly sense the presence of God.*



*[Listen here...](#)*



## Sacred Space for the City Arts Series

In a city prized for its creativity, and in particular its music, the Cathedral is a highlight due to its long-standing Sacred Space for the City Arts Series. Each year, the series offers an array of programs and workshops featuring renowned local, national and international artists -- all to celebrate and nurture God's gift of creativity. A group of supporters, collectively known as Friends of the Cathedral, helps make this series possible. Events are open to all with an occasional suggested donation. Highlights include:

### **BACHanalia**

A Nashville tradition, BACHanalia is a six-hour annual tribute to the father of western classical music, Johann Sebastian Bach. For sixteen years running, the nave of the Cathedral has echoed with the glorious melodies and harmonies of a diverse line-up of musicians that includes strings, winds, reeds, harps, singers, pianists, organists, and choirs, all to explore the riches of J.S. Bach's oeuvre.

### **Nashville Unlimited**

For over two decades this popular annual event has featured top Nashville musicians and surprise guests to support the city's homeless through the Room In The Inn Program. From gospel choirs to country solos, this Advent concert brings down the house and lifts up the unhoused in one truly memorable evening.

### **Organ Concerts**

Choral excellence demands excellent instrumentation, and Christ Church Cathedral is home to an organ of the highest quality: a Lively-Fulcher organ, which was installed in 2003. Many years of discussion, design, remodeling, and site preparation went into the acquisition of this stunning instrument, and to exquisite effect. The 2023/24 series has welcomed organists from the Cathedral at Notre Dame in Paris and the Cathedral Church at St. John the Divine in New York City.



*Interested in more detailed information about our prized Lively-Fulcher organ?*

[LEARN MORE](#)



# Spiritual Formation

Of our identifying characteristics, deep spirituality stands out as significant. Data collected from our recent parish survey reveals that 94% of us tend to agree on some level that spiritual experiences not only impact the way we look at life but impact the way we look at life often. A full 95% of us agree on some level that we experience the presence of God in our lives. For us, God is alive not only at church but on a daily basis.

This spiritual vitality fuels spiritual inquiry and a yearning for spiritual formation. Christ Church Cathedral has a long-standing reputation of meeting this need for parishioners and those in the broader community. Our sermons tend to be intellectually rigorous and personally challenging. Our Christian Formation classes invite members to study texts by prominent Christian theologians, explore probing questions, such as What does God require of us?, and engage in sustained contemplative silence. With access to professors from nearby universities, we are able to host lecturers on a range of topics, from studying motifs in the novels of William Faulkner to looking at the “Problem Texts in John’s Gospel” with prolific author and teacher, Rabbi Rami Shapiro.

As with many church organizations, our efforts toward formation have been negatively impacted over the past five years. In part, this was due to the impact of the pandemic on Christian Formation classes and Wednesday evening lecture series as we had known them, though the formation of PODS (Parishioners on Devices) was a successful pivot that provided spiritual enrichment and fellowship. In part, this was a result of a leadership transition in the office of the Canon for Christian Formation. In our series of Focused Conversations, the parish expressed its desire to reinstate a broad spectrum of rich formational offerings, and our leadership team has already set about revitalizing key programs. As we move forward, **increasing opportunities for Christian Education and spiritual formation at every stage of life** will remain one of our top five priorities. With a theologically curious, highly educated congregation in the heart of one of the country’s cultural and educational centers, Christ Church Cathedral is poised to continue to be a nucleus of dialogue and learning.

“*This is a smart church—we value learning about complex issues and are committed to growing.*”

“*Christ Church is a place where I am challenged to think and grow and push my boundaries as a human being. This is very important in my faith walk.*”

*See a calendar of all the Cathedral’s programmatic offerings.*

ALL PROGRAM OFFERINGS



Our collective commitment to the children and youth of our parish begins anew with each service of Holy Baptism. In response to the Celebrant's question of "Will you who witness these vows do all in your power to support these persons in their life in Christ?", we stand and emphatically state:

*We will.*



## Formation of Children

Our care and nurture of children begins as early as 6 weeks in our nursery program, which extends through 24 months of age. Nursery care is offered on Sunday mornings, and in recent years, intentional programming has been added to the nursery program to begin to transition two-year-olds to Catechesis of the Good Shepherd (CGS), the pillar of our [Children's Christian Formation](#).

The elementary years of nurture, education, and Christian formation are grounded in [Catechesis of the Good Shepherd](#), a program which begins in earnest for children at age three and continues through 6th grade. For over 30 years at Christ Church, this national program has been a central grounding force in the education of young people at Christ Church Cathedral. Through this Montessori-based curriculum, our young parishioners are grounded in teaching that "embraces the relationship of the child and God." Teachers ("Catechists") guide children "as they wonder and discover more about the Good Shepherd."

Each level of CGS is housed in an "atrium," and the atria are meticulously outfitted with tools for instruction that allow young people to be active agents in their own formation. Our Catechists have committed to extensive initial training and continuing education in their atrium of expertise in order to provide loving instruction grounded in pedagogical excellence. Additional highlights of the liturgical year that have our youngest parishioners at the center are **Vacation Bible School**, an annual **Advent Festival** and the ensuing **Christmas Pageant**, a weekly gathering called **Scripture, Saints and Song**, and the **Liturgy of the Light**, a year-end service led by our eldest CGS students.







## Formation of Youth

Children graduate from the CGS in 6th grade and transition into what has historically been a broad-spectrum youth program for students in middle and high schools. Christian Formation classes seek to meet students where they are in their faith, inviting them to ask hard questions, dig into Scripture, and engage in open dialogue with peers. Education towards the sacrament of Confirmation has traditionally been slated for the 10th grade year. The youth are also encouraged to participate in service activities, be that sorting sweet potatoes on a Saturday morning or embarking on an international mission trip in the summer. Because we draw families from across greater Nashville, youth come to know peers outside their school circles. In this way, EYC helps youth widen their circles of friendship and broaden their perspectives.

The recent amicable departure of our Canon for Youth Ministries has yielded a time of transition for us with respect to our youth program. With times of transition come opportunities for reflection and visioning. Since December 2023, the established Youth Advisory Council has worked in conjunction with an Ad Hoc Youth Search Committee to evaluate the strengths and deficits of the program, set a course for the future, and begin a meaningful search for this critical position in parish life. The resounding call to provide both a better space and better programming for youth was initially sounded in the "Let the Doors Be Opened" capital campaign and has been echoed in the initial stages of the search for our next Dean and Rector.



# Formation of Adults

## Adult Forum

The Adult Forum is the primary formation class for adults during the Christian Formation hour. Topics for this course range from season to season and year to year according to the interests of the parish and of the Dean. Our focus this year has been on the work of the Isaac Project.

## EfM

Education for Ministry (EfM) is a four-year study of scripture, theology, church history, ethics and ministry that meets weekly through the academic year. Blending academic and experiential learning, the course offers students a broad-based foundation in Christian faith and the tradition of the Church.

## Journey in Faith

JiF is a modern adaptation of an ancient church process by which adults were prepared for entry into Christian faith and life. Participation in this class, which begins anew each fall and which meets on Wednesday evenings, prepares adults for Confirmation, Reception, or Reaffirmation.

## Special Presentations

In addition to the Adult Forum, Christ Church Cathedral offers short-term formation classes on a variety of topics. These may relate to Family & Faith Matters, to Enneagram Studies, or to a separate topic altogether, such as an inquiry into the question, What does God require of us?

## LGBTQ+ Faith Alliance

This alliance was organized in 2023 as an effort to spread a message of inclusivity and to ensure that all people feel welcome at the Cathedral. Christ Church supports our LGBTQ+ community by participating annually in the Nashville CARES AIDS Walk and the Nashville Pride Parade and providing meaningful programming and social opportunities. More information can be found [here](#).

## Centering Prayer

Christ Church has a rich tradition of contemplative practices, which we believe to be integral to spiritual formation and maturation. The Cathedral Centering Prayer group gathers weekly year-round with a simple format that includes reading an excerpt from the writings of various authors, engaging in a brief conversation around the reading, and undertaking a twenty-minute sit of stillness and silence. Further resources may be found on the Centering Prayer [page](#).

## Creation Care

The purpose of the Cathedral's Creation Care committee is to listen, lead, encourage, equip, and support the Christ Church Cathedral community in the ongoing work of safeguarding the integrity of God's Creation and sustaining and renewing the life of the Earth. The committee offers a wealth of resources on their [learning page](#).



“It is a place where you can ask big questions or ask little questions and be supported.”



# *People & Procedures*



# Parishioner Profiles

*How long have you been a member at Christ Church? In what ways are you involved, and what do you love most about it?*



**Anna Claire Isbell**

Member since 2006; EYC; Creation Care Committee, Wayfarers; Acolyte

*I love the community at Christ Church the most. I have made so many connections and I have so many people who have become like family!*



**Joseph Watson**

Member since 2022; Usher; Isaac Project Historian

*There's so much to love [about Christ Church]. We felt immediately drawn into the Cathedral community. The people, the clergy, everyone made us feel welcome from the moment we stepped through the doors. It has been especially humbling and rewarding to get to know so many people through the difficult conversations brought about through the work of the Isaac Project. Beyond that, the music is always transcendent, and the preaching is equal parts uplifting and challenging. All of which has made it so easy to call Christ Church our spiritual home.*



**David Anderson**

Acolyte; Healing Prayer Ministry; Young Adults Ministry; Men's Ministry; Thurifer; Cathedral Tour Guide; Eucharistic Minister; Journey in Faith Catechumen; Cultural Arts Committee; Lay Alternate Delegate to the 2023 Diocesan Convention; Chair of LGBTQ+ Faith Alliance.

*"Christ Church Cathedral is an incredibly special place. Above all, I love the love that permeates our community. Every person fervently and enthusiastically seeks and serves Christ in all others. Indeed, this is a place where everyone wholly shows up in order to make earth a little more like heaven. The Cathedral truly feels like a home that love has built."*



**Sarah Benfield**

Lifelong member; Catechesis of the Good Shepherd

*I love the community that has existed within the church - the kind parishioners and the way the members of the staff connect and care for my family. We have had robust, engaging, and varied adult education as well as children's and youth programming (and mission work) in the past and I look forward to seeing that grow again as we return to a new normal post-COVID. The clergy are thoughtful in how they connect with our congregation and work to build connections with new and existing members of our community.*



# Parishioner Profiles

*How long have you been a member at Christ Church Cathedral? In what ways are you involved, and what do you love most about it?*



**Elijah Reynolds**

*Member since 2022; Lector; Volunteer with Catechesis of the Good Shepherd; Creation Care*

*We have loved seeing the focus on service. There's a clear connection between the sermons' messages and what the congregation actively does to put those messages to work. As relatively new members, we have felt welcomed by the church. Long-standing members made it easy for us to jump right into the life of the church and help us find ways for us to serve.*



**Ann Hopton**

*Member since 1944; Usher; Tour Guide; Flower Guild; Altar Guild*

*I love the sense of community and belonging that flows through our congregation. I also admire the respect and protection of the space where we worship. I feel it honors those congregations of the past.*



**Nathan Callaway**

*Member since 2018; Acolyte; Choir; BB@6 Musician; EYC*

*What I love about Christ Church Cathedral is the fellowship that we integrate in the folds of everyday interaction. The kindness of all our Vestry warms my heart, and the love for the people by our Reverends is inspiring.*

“*The people who sit in the pews around us, in our little “neighborhood,” have become like family to us. They have not merely watched my children grow up, they have helped raise them .*”



# Clergy

*What invigorates you most about Christ Church Cathedral?*



**The Reverend Vicki T. Burgess**  
*Interim Rector*

*The line of leadership - in sports teams terms - at the cathedral is both wide and deep. And while the church's membership is full of advanced-degreed professionals who are leaders in their various occupations, their exercise of Christian leadership is remarkable. Lay leaders bring their best selves to church leadership, speaking, discerning, and acting out of their Baptismal covenant and the call to follow Jesus.*



**The Right Reverend William J. Mostert**  
*Bishop in Residence*

*What invigorates and drives me is that Christ Church Cathedral is a very friendly, homey, hospitable and caring community, welcoming and open to all, a place and community one always would want to come back to.*



**The Reverend Canon Anna Russell Friedman**  
*Canon for Family Ministries*

*We are in an especially exciting time in the life of our parish and city. In a time of growth and transition, we are poised to share the light of Christ when many need it most. I am invigorated by our hope and our bravery as we answer the call.*



**The Reverend Canon Melissa (Lissa) Smith**  
*Canon Pastor*

*What excites me about Christ Church Cathedral is the sense of mission. The people of Christ Church Cathedral are committed to grow in faith, service, and discipleship with a commitment to tradition on one hand and a call for transformation on the other. The church is perfectly positioned to bring The Church to the urban core and to be a voice in the modern city, proclaiming the gospel to all generations, cultures, and races. Christ Church Cathedral knows who they want to be, where they are called to go, and what it requires of them. This next season of the church is promising, and now is the time.*



# Clergy

What invigorates you most about Christ Church Cathedral?



**The Reverend Madeleine Rebouché**  
*Associate Rector for Liturgy and Christian Formation*

*I am constantly in awe of the passionate faith of the people of Christ Church Cathedral. The love and energy of the laity is the lifeblood of this Church and I am inspired by it day after day.*



**The Reverend Richard Wineland**  
*Associate Rector for Evangelism and Parish Life*

*I never fail to be inspired by those who call the Cathedral parish their home congregation. They practice 'possibility thinking' yet are rooted in wisdom. They are thoughtful disciples who are not reluctant to take risks for the sake of the gospel.*



**The Venerable Roger Saterstrom**  
*Archdeacon*

*What invigorates me about Christ Church Cathedral is our ability to hold in prayer each other and our cathedral congregation in times of joy and times of conflict; our ongoing willingness to acknowledge our weaknesses and our sins and to celebrate our victories, small and large; and our wide embrace of welcome to all seekers at all times.*



**The Reverend Mary McCarthy**  
*Deacon*

*The beautiful liturgy, the music, and the tradition that goes back centuries never fails to move me. So, too, the dedication of our congregation in their faithful attendance and willingness to participate. But what touches me so deeply has been the support the congregation has given me in my first (sometimes rocky) year. I am continually lifted up, encouraged and taught by the clergy and congregants. What is primary and fundamental to my experience at Christ Church Cathedral is the knowledge that the love and care that I have received is not something unique but is freely given and shared by so many of our community to those in the Christ Church family and to the larger world beyond our doors.*



# Staff



Elmarie Brice,  
*Reception*  
*23 years*



Molly Cole  
*Communications Administrative*  
*Assistant, 2 Years*



Dr. Michael Velting  
*Canon for Music*  
*30 Years*



Amy Greenman  
*Events Coordinator*  
*19 Years*



Dr. Malcom Matthews  
*Associate Organist &*  
*Choirmaster, 3 Years*



Will Fulcher  
*Senior Sexton*  
*20 Years*



Mark McQueen  
*Business & Facilities Manager*  
*16 Years*



Desaree Welch  
*Canon for Communication*  
*8 Years*



Anzora Lee-Starks  
*Print/Production Manager*  
*25 Years*



MC Roche  
*Youth Coordinator*  
*1 Year*





## Vestry & Officers

### *Class of 2025*

Hal Johnson  
Susie Ries  
Jay Wellons  
John Whitaker  
Tyler Yarbro

### *Class of 2026*

Billy Ballard  
Christina Isbell  
Donald McKenzie  
David Morton  
Sarah Tally

### *Class of 2027*

Susan Barge  
Sam Bessey  
Ellie Teal Gardner  
Anna Grimes  
David Paine

### *Officers*

Hal Johnson, Senior Warden  
John Whitaker, Junior Warden  
Ellen Wright, Clerk  
Dale Maxfield, Treasurer





# Statistics

## *2023 Membership Statistics*

Baptized Members .....	1,774
Enrolled Adult Confirm Communicants .....	1,316
Adults Confirmed/Received .....	14
Adults Reaffirmed.....	4
Youth Confirmed .....	3
Episcopalians Transferred in .....	13
(and Christians from other traditions in full communion with the Episcopal Church)	
Members Transferred Out.....	38
Member Deaths.....	20
Baptisms.....	16 (One Adult)
Weddings .....	8
Burial Offices .....	19

## *2023 Worship Statistics*

Sunday Average Worship (In-Person) .....	465
Weekday Celebrations of the Holy Eucharist .....	211
Morning Prayer (on Facebook) .....	200



# Financials

*Endowment Funds*

<i>Fund</i>	<i>2023 Budget</i>	<i>2023 Year End</i>
<i>EEC</i>	4,588,733	5,079,902
<i>Shillig Fund</i>	3,982,069	4,408,052
<i>McCurdy Trust</i>	4,072,727	4,473,955
<b><i>Total</i></b>	<b>12,643,529</b>	<b>13,961,909</b>



# Budget Comparison

<i>Income</i>	<i>2023 Budget</i>	<i>2023 Year End</i>	<i>2024 Budget</i>	<i>Expense</i>	<i>2023 Budget</i>	<i>2023 Year End</i>	<i>2024 Budget</i>
<i>Current &amp; Prior Year Pledge Income</i>	2,048,363	1,893,682	1,902,376	<i>Salaries &amp; Benefits</i>	1,585,712	1,536,480	1,632,468
<i>Offering &amp; Contributions</i>	123,346	113,161	138,346	<i>Administrative Support</i>	141,500	128,773	137,000
<i>Interest &amp; Other Income</i>	12,500	36,705	50,000	<i>Property Management</i>	349,358	305,376	334,858
<i>Endowment Income</i>	375,000	438,384	420,000	<i>Christian Education</i>	89,150	66,275	84,150
<i>Christian Education</i>	51,100	29,443	49,600	<i>Lay Ministries</i>	274,372	261,167	251,472
<i>Lay Ministries</i>	32,175	23,710	27,175	<i>Music Programs</i>	30,850	23,998	31,775
<i>Music</i>	15,300	11,188	14,000	<i>Diocesan Support</i>	199,392	238,411	55,772
<i>Kitchen</i>	7,150	6,364	6,550	<i>Kitchen</i>	24,900	24,495	21,900
<i>Sacred Space</i>	14,500	24,854	22,000	<i>Sacred Space</i>	67,550	76,515	54,750
<i>Vestry/Stewardship/Financial</i>	133,700	125,832	222,398	<i>Vestry/Stewardship/Financial</i>	50,350	41,751	48,300
<b><i>Operating Income</i></b>	<b>2,813,134</b>	<b>2,703,322</b>	<b>2,852,445</b>	<b><i>Operating Expenses</i></b>	<b>2,813,134</b>	<b>2,703,242</b>	<b>2,852,445</b>

***Net Operating Fund  
Increase/(Decrease)***

—

81

—



# Commissions

The ministry structure for Christ Church Cathedral is organized into eight Commissions, each falling under one of three headings:

## *Proclaim*

We will PROCLAIM the Good News of God in Christ as disciples engaged in worship, prayer, example, study, and the arts.

## *Seek*

We will SEEK to know Christ more fully and each other more deeply across generations, families, and neighborhoods.

## *Serve*

We will SERVE the stranger, welcome the guest, support the underserved, and shield the vulnerable.

Under each Commission are committees that contribute to carrying out the Commission charge. The Commission should be viewed as an “organizing umbrella structure” for the ministry of each committee that provides the following:

- † *Big picture view*
- † *Accessibility for how any parishioner might become involved to serve*
- † *Development of strategy/expectations/direction for each committee*
- † *Evaluation of each committee’s work*
- † *Accountability for budget requests for each committee*
- † *Encouragement and support for each committee*



# Commissions

## LITURGY

The Commission for Liturgy is charged with providing assistance to the Dean and, when applicable, to the Canon Precentor, to plan, coordinate, and execute worship.

## EVANGELISM

The Commission for Evangelism is charged with coordinating and managing Christ Church Cathedral ministries that assist parishioners, friends, associates, and staff in “proclaiming by word and example the Good News of God in Christ.”

## OUTREACH

The Commission for Outreach is charged with coordinating and managing servant ministries of Christ Church Cathedral that focus on the urban, regional, diocesan, and global contexts of its mission to “seek and serve Christ in all persons.”

## CHRISTIAN FORMATION

The Commission for Christian Formation is charged with fostering the love of God in Christ through the spiritual, educational, and moral formation of all parishioners from their baptism through their burial.

## PASTORAL CARE

The Commission for Pastoral Care is charged with ensuring that all members of the Christ Church Cathedral community have access to guidance, support, and ministry during times of need and times of life’s milestones.

## PARISH LIFE

The Commission for Parish Life is charged with fostering the bonds of affection among the congregation as members of Christ’s Body by considering ways for all parishioners to make connections with one another, share in the fellowship of Christ, and “welcome the stranger.”

## CATHEDRAL LIFE

The Commission for Cathedral Life, in consultation with the Vestry, designated clergy and staff, and, where appropriate, the Cathedral Chapter, is charged with oversight of ministries and events associated with our parish’s role as the Cathedral for the Diocese of Tennessee.

## ADMINISTRATION

The Commission for Administration is charged with supporting the physical and financial infrastructure of Christ Church Cathedral.

*To learn more, read the Christ Church Cathedral 2023 Annual Report.*

[ANNUAL REPORT](#)



# Search

The Vestry sought to assemble a Search Committee that is as broadly representative of the parish as possible and includes a diversity of skills and talents so that the committee may effectively carry out this important work. The Search Committee members are as follows:

- |                     |                           |
|---------------------|---------------------------|
| Roger Moore, Chair  | Catherine Sawyer          |
| Lawrence Blank-Cook | Sarah Tally               |
| Catherine Clark     | Varina Willse             |
| Scott Hoffman       | Senior Warden, Ex Officio |
| Arnold Malcolm      | Junior Warden, Ex Officio |
| Carter Paine        |                           |

We, as a committee, trust that God is guiding our search, and we look with faith and hope toward the unfolding of His plan for Christ Church Cathedral.

**CREDITS**  
Photography: Peter Vagt  
Design: Emily Little Designs

**CHRIST CHURCH CATHEDRAL**  
615-255-7729  
[www.christcathedral.org](http://www.christcathedral.org)

*For surely I know the plans I have for you, says the LORD, plans for your welfare and not for harm, to give you a future with hope.*

**JEREMIAH 29:11**

*Please direct any inquiries to*

[NOMINATIONS@CHRISTCATHEDRAL.ORG](mailto:NOMINATIONS@CHRISTCATHEDRAL.ORG)

*Please use this form to submit a nomination.*

[HTTPS://FORM.JOTFORM.COM/241066658489066](https://form.jotform.com/241066658489066)

*Lord Jesus Christ,  
make this a temple of your presence and a house of prayer.  
Be always near us when we seek you in this place.  
Draw us to you,  
when we come alone and when we come with others,  
to find comfort and wisdom,  
to be supported and strengthened,  
to rejoice and give thanks.  
May it be here, Lord Jesus,  
that we are made one with you and with one another,  
so that our lives are sustained and sanctified for your service.*

*Amen*

